



Available Here

**blu**bracknell

SAT NAV RG42 1PL

DISCLAIMER

The material and information contained in this document is for general information purposes only. You should not rely upon the material or information in this document as a basis for making any business, legal or any other decisions. Whilst we endeavour to keep the information up to date and correct, we make no representations or warranties of any kind, express or implied about the completeness, accuracy, reliability, suitability or availability with respect to the information contained herein. Any reliance you place on such material is therefore strictly at your own risk. It is very important to do your own analysis before making any investment based on your own personal circumstances. You should take independent financial advice from a professional in connection with, or independently research and verify, any information that you find in this document and wish to rely upon, whether for the purpose of making an investment decision or otherwise. All CGIs of the external appearance and communal areas are conceptual and subject to change subject to planning and final design.



**blu**bracknell

A NEW DEVELOPMENT OF STUDIO TO  
TWO BEDROOM BESPOKE APARTMENTS  
LOCATED IN BRACKNELL BERKSHIRE

# Blu Bracknell, this is the place and the time

This stunning new development consists of apartments varying in size from studio to two bedrooms. Blu Bracknell encourages outside living and the spirit and kinship of community.



COMPUTER GENERATED IMAGE OF THE ENTRANCE AT BLU BRACKNELL

# BluLiving – more than a concept, it is a new way of living

**Blu Bracknell is a BluLiving development. BluLiving is a name, a brand, a mark of quality. To be awarded this name, there are certain conditions which a development must meet.**

### Excellent Locations

Bracknell is undergoing a dramatic renaissance. There has been massive investment in Bracknell's underlying infrastructure as well as more visible benefits that include the brand-new Lexicon Shopping Centre transforming the town into a desirable place to live and work.

### Enduring Design

The apartments have been designed for life. Bespoke interiors that use quality materials and incorporate sustainable features will create homes that will last a lifetime.

### Financially Viable

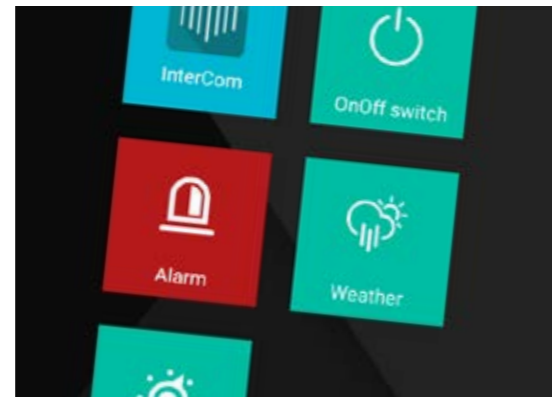
The properties at Blu Bracknell offer good value for money. The high-quality specifications and ergonomic layouts make these homes highly desirable.

### Smart Technology

Blu Bracknell will offer smart technology with the Zipato home automation system. Residents will control this using their unique BluLiving app which will also provide a digital social community for owners. These useful little technological tools will save time and effort and have been designed to enhance the BluLiving experience.



THE LEXICON, BRACKNELL



ZIPATO HOME AUTOMATION SYSTEM



PHOTOGRAPH FROM SHOW APARTMENT

Each apartment has been individually designed to maximise the available space



PHOTOGRAPH FROM SHOW APARTMENT



PHOTOGRAPH FROM SHOW APARTMENT

## Take **time** out to relax in your own **space**

**Blu Bracknell brings together luxuries and conveniences to create your perfect day.**

Blu Bracknell lies within walking distance of Bracknell town centre and within easy reach of some of the town's biggest businesses. Convenience goes hand in hand with comfort as each apartment has been individually designed to maximise the available space and light and to emphasise the colours and textures of the finishes.

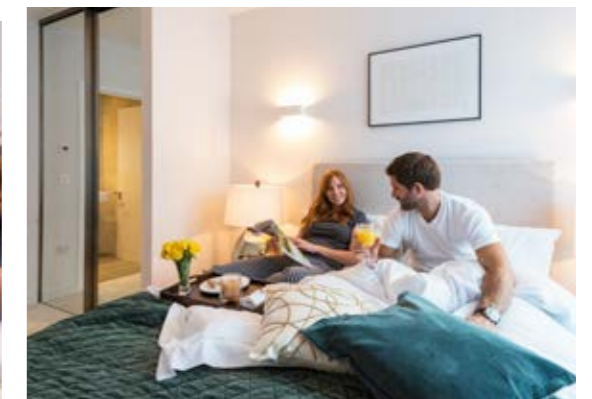
This is a secure, gated development, CCTV and video

entry systems will welcome your guests and deter those who are less welcome. An on-site porter and concierge will collect and deliver packages, arrange odd-jobs and relieve the stresses of everyday living.

Neighbours and friends will have a fresh-air social nucleus where they can work out or work up an appetite. The landscaped gardens contain a barbecue and picnic area, a table tennis hub and an outdoor gym.



PHOTOGRAPH FROM SHOW APARTMENT



PHOTOGRAPH FROM SHOW APARTMENT

Imagine it's morning.  
Not the break of dawn but a  
relaxed Saturday morning...

## When you have all the time in the world

**Embrace a new day at Blu Bracknell. Imagine it's morning. Not the break of dawn but a relaxed Saturday morning and the sunlight is filtering through the curtains.**

Just picture it. The SMEG oven is on to crisp the croissants, the coffee is bubbling and milk is frothing. It's warm enough to take breakfast in the communal gardens.

You check your emails and call the concierge to ask him to book a cab for this evening. Then you message your neighbour at number 42 on the BluLiving app to make sure she's still game for lunch.

You step into the roomy en-suite to luxuriate under the rain shower. Warm, fluffy towels from the heated towel rail to dry off then collect your lotions together for some self-pampering. You're ready to face the day.

Send a quick wave to the concierge as you pass through the lobby then outside for your car. The gates quickly respond to your electronic key fob and you take your leave of Blu Bracknell.

It's time to relax or time for play. Breakfast in bed or a pillow fight?

PHOTOGRAPH FROM SHOW APARTMENT





PHOTOGRAPH FROM SHOW APARTMENT



PHOTOGRAPH FROM SHOW APARTMENT



PHOTOGRAPH FROM SHOW APARTMENT

## In your own **time** at your own place

**After a busy day at the office, kick off your shoes, kick back, pour a tall drink, relax and draw in a few deep breaths.**

The apartments at Blu Bracknell have been designed for relaxation as well as function and will respond to your changing needs.

There is a generous provision of efficient integrated kitchen appliances, all have been ergonomically designed with touch controls and have been chosen for practicality as well as style. Soft-close cabinet doors and drawers and wipe-clean worktops complement the Italian designed units.

Bathrooms are fresh and bright, fully tiled, easy to clean and supremely fit for purpose. There is ample space for storage, LED mood lighting and beautifully engineered wooden floors. Bedrooms boast luxury carpet underfoot and all of the master bedrooms come with a built in wardrobe.

These elegant spaces await your personalisation, add a few splashes of colour with wall art, a coffee table book or flowers. Make yourself at home in an apartment at Blu Bracknell.





Step out of your door and  
in minutes you are where  
you need to be.



ALL PHOTOGRAPHY FROM THE LEXICON, BRACKNELL





ABOVE ODEON CINEMA BELOW THE LEXICON

ABOVE THE BULL BOTTOM LOCAL COMPANIES

## Get to where the action is in no **time** at all

**Step out of your door and in minutes you are where you need to be. Downtown Bracknell has been changing. Superb new shopping, entertainment and restaurant facilities and a host of large companies have increased the appeal of this prosperous town.**

In recent years a third of Bracknell's old town centre has been demolished and rebuilt. Gone is the Brutalist post-war architecture and in its place is an elegant new shopping and leisure centre, The Lexicon. Many of the high street stores have had face lifts and there are additional parking facilities and improvements to local transport.

Where once local residents travelled to the nearby centres of Ascot, Wokingham or Windsor to shop, the tide has truly turned and Bracknell now attracts shoppers from the affluent surrounding neighbourhoods in Berkshire and Surrey.

Several high-tech giants have made Bracknell their home over the last 20 years including Vodafone, Hewlett Packard and Dell, consolidating the area's reputation as the UK's Silicon Valley and attracting a talented workforce. Sleek and impressive headquarter buildings occupied by the likes of Honda, Waitrose and Panasonic fuel the economy by serving as major local employers.

Residents at Blu Bracknell are set to reap the benefits as employees, commuters, business start-ups, young families and ambitious executives in an environment that encourages growth and prosperity.





THE LEXICON SHOPPING CENTRE

## It's 9am and opening time at The Lexicon

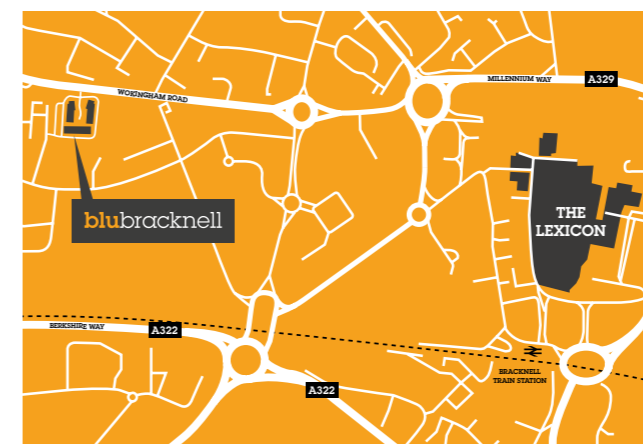
Whether you want to stay for an hour or for the best part of a day, at The Lexicon you'll find something that will captivate and revive you.

The centre of Bracknell has recently been transformed thanks to the arrival of The Lexicon, a magnificent new shopping and leisure centre. This new destination has already broken visitor records.

The arrival of The Lexicon in 2017 has created a vibrant new social hub for Bracknell. Pioneered by the major stores of Fenwick, M&S, Next, H&M and Waitrose along with fashion and gift shops, health, beauty and home stores, the Lexicon is leading the way in Bracknell's revival.

The Lexicon also provides a state-of-the-art 12-screen cinema and a string of major coffee shops and food outlets.

The town centre regeneration and expansion of The Lexicon will continue with plans to improve the Civic Quarter, the Peel Centre and Market Square already underway, so the retail experience will be further enhanced. The Lexicon has already jumped up the list of top UK shopping centres and the trend is sure to continue.



ABOVE ENTRANCE AND THE AVENUE AT THE LEXICON BELOW MAP & SELECTION OF THE STORES AT THE LEXICON

Outdoor gym, table tennis and a barbecue area set within an attractive landscaped garden.



COMPUTER GENERATED IMAGE OF  
OUTDOOR GYM AND TABLE TENNIS



BARBECUE AND FAMILY AREA



COOKING ON THE OUTDOOR BARBECUE

## Have the **time** of your life at **Blu** Bracknell

**There is a great combination of on-site facilities, outdoor activities and eating out options on hand and in the close vicinity. There will always be good reason to just get up and go.**

At Blu Bracknell there is a dedicated residents' zone that includes an outdoor gym, table tennis and a barbecue area set within an attractive landscaped garden. A workout here can take 15 minutes or 50 and a game of ping pong will last just as long as you like.

The barbecue area at Blu Bracknell emulates the Australian style outdoor grills that are available in their public parks. None can be booked but all are free to use, just bring your own food and demonstrate your culinary skills. And if your masterpiece burns, there's always the trusty Indian or a lovely country gastro pub within a short walk.

If you fancy a change of scenery, why not immerse yourself in an outdoor experience in the nearby Swinley Forest, a vast 2,600 acre stretch of woodland with walking and biking trails, orienteering, segway or horse riding.

Take nature seriously with a visit to Go Ape; speed down zip slides, cross rope bridges and swing through the trees high above the forest floor. The recently refurbished Coral Reef Waterworld provides another fun excursion for all the family and with indoor and outdoor pools.

Bracknell Ski Slope is the perfect place to polish your parallel turns in anticipation of your holiday in the Dolomites or the Alps.



GO APE BRACKNELL IN SWINLEY FOREST



BRACKNELL SKI SLOPE



USING THE OUTDOOR GYM



ABOVE ASCOT RACECOURSE AND SOUTH HILL PARK ARTS CENTRE BELOW READING TOWN CENTRE & LILY HILL PARK

## Making the most of your quality time

**You are perfectly positioned to enjoy beautiful Berkshire which has swathes of ancient forestland, beautifully maintained parks and nature reserves as well as a rich and varied programme of activities.**

You could take a quick drive up to Windsor to share a late lunch at Limes. Grab a table outside on the cobbles with a fantastic view across to the castle. Order a fresh baguette with a barista coffee to ease those hunger pangs then take a leisurely stroll along the tree-lined Long Walk in the footsteps of princes, queens and kings.

Windsor Great Park is stunning, you can see the magnificent copper horse statue in the distance and red deer roaming freely between the trees. Take a slow amble back, stopping off at a couple of the more formal gardens then go to reclaim your car.

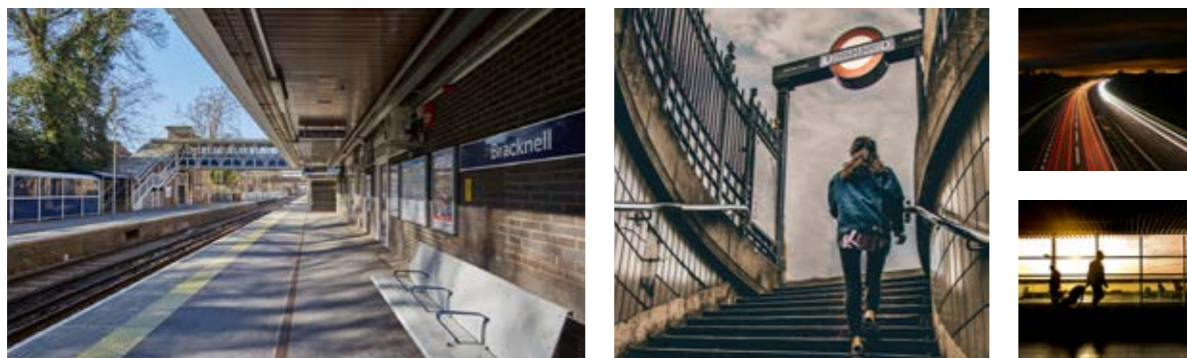
Take a 10 minute drive to Ascot, home to equestrians most celebrated event, Royal Ascot before continuing to neighbouring Virginia Water to visit its stunning lakes at the southern border of Windsor Great Park.

Stop for an early dinner in the vibrant centre of Reading, another location to shop and eat. Or try nearby Wokingham, also undergoing a regeneration of its high street area and offering a range of boutique eating and shopping options.

The evening brings an invitation to see the new arts film at South Hill Park, a graceful Grade II listed building that was once a stately home. The perfect end to a perfect day.



WINDSOR CASTLE



LEFT BRACKNELL TRAIN STATION CENTRE LONDON UNDERGROUND TOP ROAD CONNECTIONS BELOW HEATHROW

## Time to go out or time to come home

When you need to venture out, Bracknell's transport links will be to your advantage. Speedy motorway connections and a comprehensive rail network will aid you on your journey.

Blu Bracknell is located on the western edge of town less than 9 miles from Junction 10 of the M4 and 25 miles from Junction 3 of the M3. The major centres of Reading and Maidenhead are both less than 12 miles distant while Slough is around 18 miles away. Windsor, Sunningdale, Reading and Wokingham are all easy to get to either by road or rail, whether for business or pleasure.

When a night on the town or business in the city means a trip to London, there are frequent trains from Bracknell direct to Waterloo or change at Reading for London Paddington, either route takes about an hour.

Heathrow Airport is an ideal departure point for overseas travel and is best accessed by road. The drive should take less than 30 minutes via the M4 motorway.

TOWN	DISTANCE BY ROAD	TIME BY ROAD
BRACKNELL TOWN CENTRE	0.5 MILES	5 MINS
ASCOT	5.0 MILES	12 MINS
SUNNINGDALE	8.4 MILES	18 MINS
VIRGINIA WATER	9.0 MILES	22 MINS
WINDSOR	11 MILES	25 MINS
READING	12.1 MILES	24 MINS
SLOUGH	12.8 MILES	29 MINS
HEATHROW AIRPORT	19.0 MILES	30 MINS
LONDON (HAMMERSMITH)	37 MILES	54 MINS

Source: Google

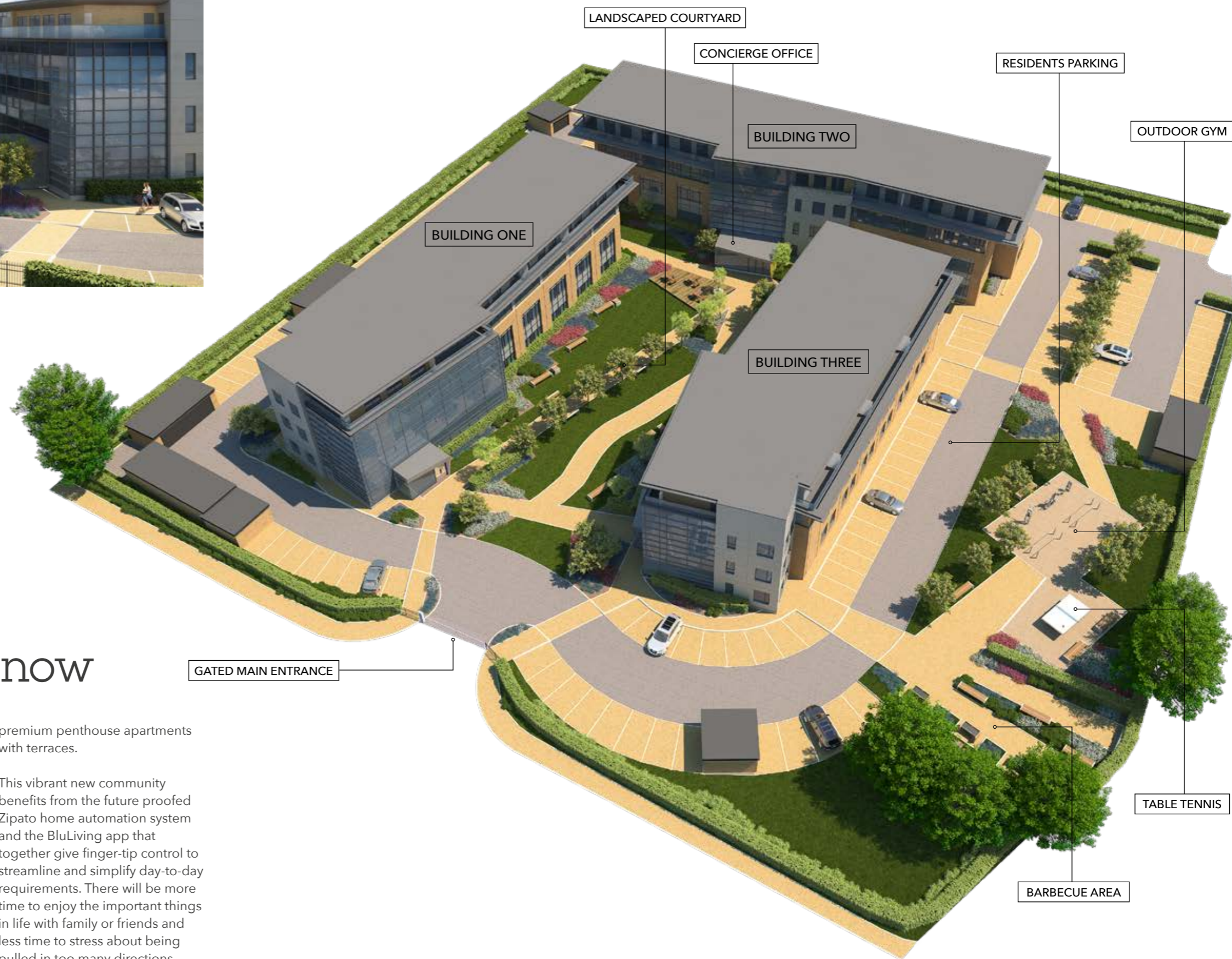
### TRAIN CONNECTIONS FROM BRACKNELL



WATERLOO TRAIN STATION



COMPUTER GENERATED IMAGE



## A new home at Blu Bracknell, the time is now

**This contemporary and stylish development has been designed to celebrate modern living by offering its owners the highest specification interiors within an inclusive community.**

Blu Bracknell's three residential buildings are arranged in a horseshoe shape around a pretty central courtyard with views over the landscaped gardens. There is ample parking around the perimeter of the site along with the barbecue, outdoor gym and table tennis communal hubs.

The buildings house 121 apartments varying in size from studio to two bedrooms. There will be a second phase of

premium penthouse apartments with terraces.

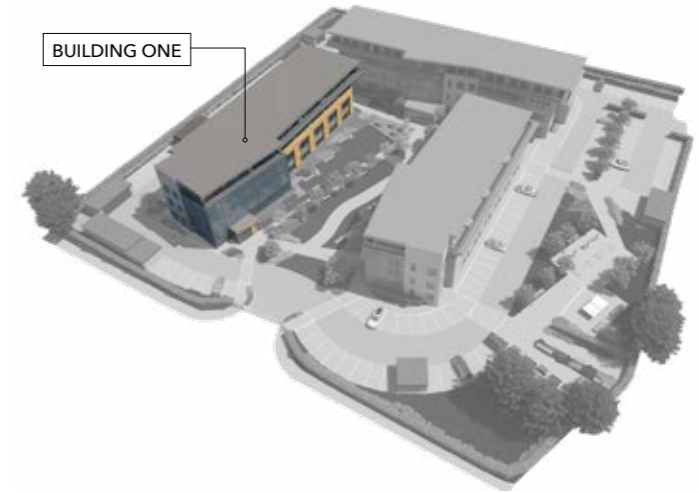
This vibrant new community benefits from the future proofed Zipato home automation system and the BluLiving app that together give finger-tip control to streamline and simplify day-to-day requirements. There will be more time to enjoy the important things in life with family or friends and less time to stress about being pulled in too many directions.

COMPUTER GENERATED IMAGE OF THE SITE PLAN FOR BLU BRACKNELL





COMPUTER GENERATED IMAGE OF BUILDING ONE



BLOCK GUIDE FOR BUILDING ONE

## BUILDING ONE GROUND FLOOR



## DIMENSIONS

<p><b>APARTMENT 101</b> TOTAL AREA: 46.4 SQM (499 SQ.FT) Living/Dining/Kitchen 6.04m x 4.28m 19'10" x 14'1" Bedroom 4.28m x 2.83m 14'1" x 9'3"</p>	<p><b>APARTMENT 108</b> TOTAL AREA: 41.4 SQM (446 SQ.FT) Living/Dining/Kitchen 7.18m x 3.05m 23'7" x 10'0" Bedroom 4.92m x 2.80m 16'2" x 9'2"</p>
<p><b>APARTMENT 102</b> TOTAL AREA: 49.0 SQM (527 SQ.FT) Living/Dining/Kitchen 3.57m x 5.58m 11'9" x 8'4" Bedroom 3.79m x 2.94m 12'5" x 9'8"</p>	<p><b>APARTMENT 109</b> TOTAL AREA: 59.3 SQM (638 SQ.FT) Living/Dining/Kitchen 6.59m x 3.17m 21'7" x 10'5" Master Bedroom 4.92m x 2.97m 16'2" x 9'9" Bedroom 2 3.28m x 2.84m 10'9" x 9'4"</p>
<p><b>APARTMENT 103</b> TOTAL AREA: 41.2 SQM (443 SQ.FT) Living/Dining/Kitchen 7.12m x 3.03m 23'4" x 9'11" Bedroom 4.91m x 2.81m 16'1" x 9'3"</p>	<p><b>APARTMENT 110</b> TOTAL AREA: 41.5 SQM (447 SQ.FT) Living/Dining/Kitchen 7.18m x 3.07m 23'7" x 10'1" Bedroom 4.92m x 2.80m 16'2" x 9'2"</p>
<p><b>APARTMENT 104</b> TOTAL AREA: 53.4 SQM (575 SQ.FT) Living/Dining/Kitchen 8.00m x 3.16m 26'3" x 10'4" Bedroom 5.64m x 2.95m 18'6" x 9'8"</p>	<p><b>APARTMENT 111</b> TOTAL AREA: 37.9 SQM (408 SQ.FT) Living/Dining/Kitchen 6.59m x 2.95m 21'7" x 9'8" Bedroom 4.42m x 2.90m 14'6" x 9'6"</p>
<p><b>APARTMENT 105</b> TOTAL AREA: 41.6 SQM (448 SQ.FT) Living/Dining/Kitchen 7.18m x 3.05m 23'7" x 10'0" Bedroom 5.38m x 2.82m 17'8" x 9'3"</p>	<p><b>APARTMENT 112</b> TOTAL AREA: 41.5 SQM (447 SQ.FT) Living/Dining/Kitchen 7.18m x 3.08m 23'7" x 10'1" Bedroom 4.92m x 2.80m 16'2" x 9'2"</p>
<p><b>APARTMENT 106</b> TOTAL AREA: 41.4 SQM (446 SQ.FT) Living/Dining/Kitchen 7.18m x 3.04m 23'7" x 10'0" Bedroom 5.38m x 2.81m 17'8" x 9'3"</p>	<p><b>APARTMENT 113</b> TOTAL AREA: 38.3 SQM (412 SQ.FT) Living/Dining/Kitchen 5.89m x 3.28m 19'4" x 10'9" Bedroom 4.33m x 2.78m 14'2" x 9'1"</p>
<p><b>APARTMENT 107</b> TOTAL AREA: 66.1 SQM (712 SQ.FT) Living/Dining/Kitchen 6.59m x 5.32m 21'7" x 17'5" Master Bedroom 4.92m x 3.19m 16'2" x 10'6" Bedroom 2 3.31m x 2.70m 10'10" x 8'10"</p>	<p><b>APARTMENT 114</b> TOTAL AREA: 64.0 SQM (689 SQ.FT) Living/Dining/Kitchen 7.18m x 3.91m 23'7" x 12'10" Master Bedroom 5.12m x 3.03m 16'10" x 9'11" Bedroom 2 3.88m x 2.74m 12'9" x 9'0"</p>

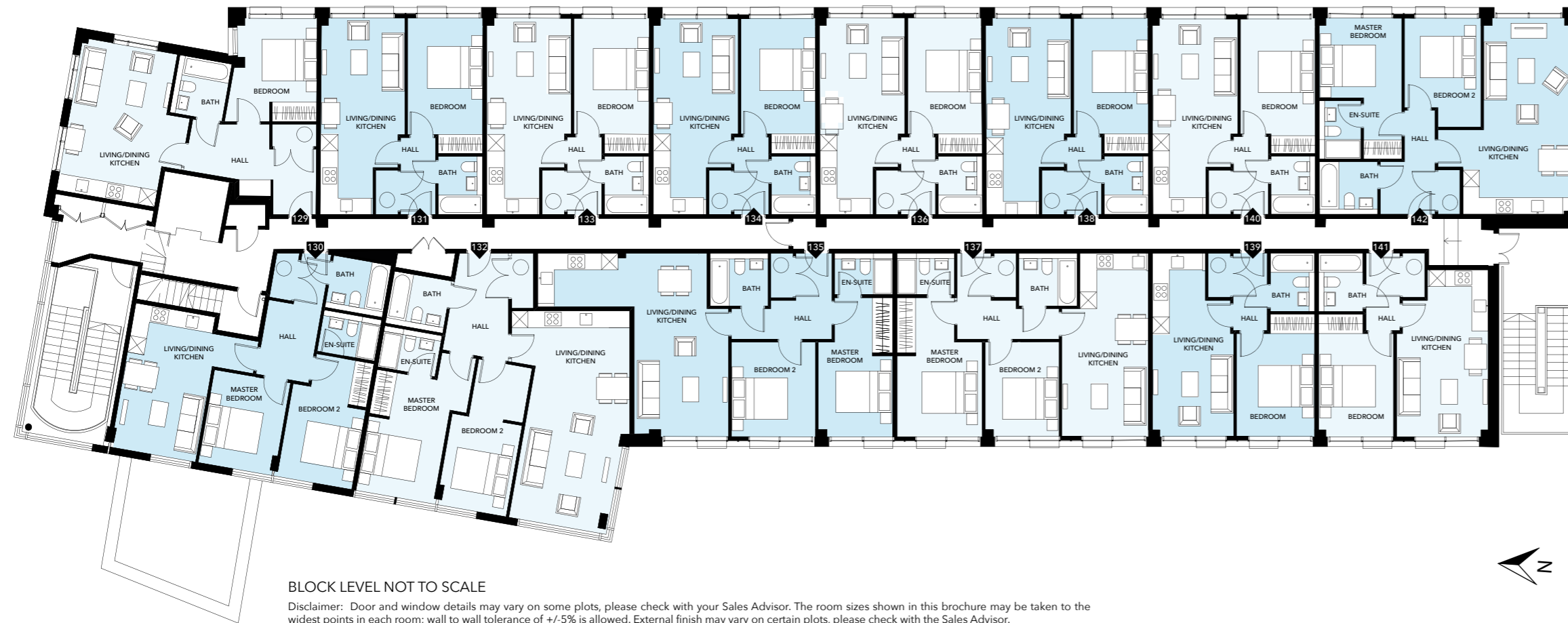
## BUILDING ONE FIRST FLOOR



## DIMENSIONS

<b>APARTMENT 115</b> TOTAL AREA: 49.0 SQM (527 SQ.FT) Living/Dining/Kitchen 5.57m x 3.54m 18'3" x 11'7" Bedroom 3.79m x 2.94m 12'5" x 9'8"	<b>APARTMENT 122</b> TOTAL AREA: 41.4 SQM (446 SQ.FT) Living/Dining/Kitchen 7.19m x 3.05m 23'7" x 10'0" Bedroom 4.91m x 2.80m 16'1" x 9'2"
<b>APARTMENT 116</b> TOTAL AREA: 63.6 SQM (685 SQ.FT) Living/Dining/Kitchen 6.49m x 3.02m 21'3" x 9'11" Master Bedroom 3.39m x 2.80m 11'1" x 9'2" Bedroom 2 3.39m x 3.03m 11'1" x 9'11"	<b>APARTMENT 123</b> TOTAL AREA: 59.0 SQM (635 SQ.FT) Living/Dining/Kitchen 6.59m x 3.15m 21'7" x 10'4" Master Bedroom 4.94m x 3.01m 16'2" x 9'11" Bedroom 2 3.31m x 2.71m 10'10" x 8'11"
<b>APARTMENT 117</b> TOTAL AREA: 41.4 SQM (446 SQ.FT) Living/Dining/Kitchen 7.19m x 3.04m 23'7" x 10'0" Bedroom 4.91m x 2.81m 16'1" x 9'3"	<b>APARTMENT 124</b> TOTAL AREA: 41.5 SQM (447 SQ.FT) Living/Dining/Kitchen 7.19m x 3.07m 23'7" x 10'1" Bedroom 4.91m x 2.80m 16'1" x 9'2"
<b>APARTMENT 118</b> TOTAL AREA: 75.2 SQM (809 SQ.FT) Living/Dining/Kitchen 8.02m x 4.33m 26'4" x 14'2" Master Bedroom 4.39m x 2.89m 14'5" x 9'6" Bedroom 2 5.47m x 2.60m 17'11" x 8'6"	<b>APARTMENT 125</b> TOTAL AREA: 41.4 SQM (446 SQ.FT) Living/Dining/Kitchen 7.19m x 3.08m 23'7" x 10'1" Bedroom 4.90m x 2.80m 16'1" x 9'2"
<b>APARTMENT 119</b> TOTAL AREA: 41.6 SQM (448 SQ.FT) Living/Dining/Kitchen 7.19m x 3.06m 23'7" x 10'0" Bedroom 4.92m x 2.81m 16'2" x 9'3"	<b>APARTMENT 126</b> TOTAL AREA: 37.9 SQM (408 SQ.FT) Living/Dining/Kitchen 6.59m x 3.05m 21'7" x 10'0" Bedroom 4.33m x 2.80m 14'2" x 9'2"
<b>APARTMENT 120</b> TOTAL AREA: 41.4 SQM (446 SQ.FT) Living/Dining/Kitchen 7.19m x 3.04m 23'7" x 10'0" Bedroom 4.92m x 2.81m 16'2" x 9'3"	<b>APARTMENT 127</b> TOTAL AREA: 38.8 SQM (412 SQ.FT) Living/Dining/Kitchen 5.91m x 3.28m 19'5" x 10'9" Bedroom 4.34m x 2.78m 14'3" x 9'1"
<b>APARTMENT 121</b> TOTAL AREA: 67.4 SQM (725 SQ.FT) Living/Dining/Kitchen 6.59m x 6.13m 21'7" x 20'1" Master Bedroom 4.93m x 3.21m 16'2" x 10'6" Bedroom 2 3.31m x 2.70m 10'10" x 8'10"	<b>APARTMENT 128</b> TOTAL AREA: 63.9 SQM (688 SQ.FT) Living/Dining/Kitchen 7.19m x 3.91m 23'7" x 12'10" Master Bedroom 5.13m x 3.01m 16'10" x 9'11" Bedroom 2 3.87m x 2.72m 12'9" x 8'11"

## BUILDING ONE SECOND FLOOR



## DIMENSIONS

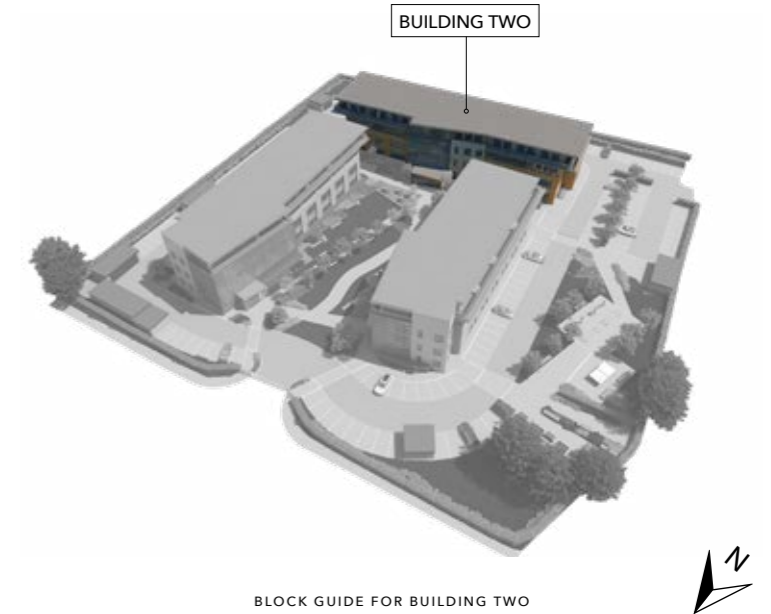
<b>APARTMENT 129</b> TOTAL AREA: 49.0 SQM (527 SQ.FT) Living/Dining/Kitchen 5.54m x 3.76m 18'2" x 12'4" Bedroom 3.75m x 2.96m 12'4" x 9'9"	<b>APARTMENT 136</b> TOTAL AREA: 41.45 SQM (446 SQ.FT) Living/Dining/Kitchen 7.15m x 3.05m 23'6" x 10'0" Bedroom 4.93m x 2.80m 16'2" x 9'2"
<b>APARTMENT 130</b> TOTAL AREA: 57.4 SQM (618 SQ.FT) Living/Dining/Kitchen 5.27m x 3.16m 17'3" x 10'4" Master Bedroom 3.39m x 2.87m 11'1" x 9'5" Bedroom 2 3.39m x 2.82m 11'1" x 9'3"	<b>APARTMENT 137</b> TOTAL AREA: 60.0 SQM (646 SQ.FT) Living/Dining/Kitchen 6.69m x 3.15m 21'11" x 10'4" Master Bedroom 5.02m x 3.05m 16'6" x 10'0" Bedroom 2 3.41m x 2.75m 11'2" x 9'0"
<b>APARTMENT 131</b> TOTAL AREA: 41.4 SQM (446 SQ.FT) Living/Dining/Kitchen 7.15m x 3.03m 23'6" x 9'11" Bedroom 4.92m x 2.81m 16'2" x 9'3"	<b>APARTMENT 138</b> TOTAL AREA: 41.5 SQM (447 SQ.FT) Living/Dining/Kitchen 7.15m x 3.07m 23'6" x 10'1" Bedroom 4.91m x 2.80m 16'1" x 9'2"
<b>APARTMENT 132</b> TOTAL AREA: 75.1 SQM (808 SQ.FT) Living/Dining/Kitchen 8.02m x 3.59m 26'4" x 11'9" Master Bedroom 4.39m x 2.83m 14'5" x 9'3" Bedroom 2 5.39m x 2.60m 17'8" x 8'6"	<b>APARTMENT 139</b> TOTAL AREA: 38.6 SQM (415 SQ.FT) Living/Dining/Kitchen 6.69m x 3.05m 21'11" x 10'0" Bedroom 4.45m x 2.80m 14'7" x 9'2"
<b>APARTMENT 133</b> TOTAL AREA: 41.6 SQM (448 SQ.FT) Living/Dining/Kitchen 7.15m x 3.06m 23'6" x 10'0" Bedroom 4.92m x 2.81m 16'2" x 9'3"	<b>APARTMENT 140</b> TOTAL AREA: 41.6 SQM (448 SQ.FT) Living/Dining/Kitchen 7.15m x 3.08m 23'6" x 10'1" Bedroom 4.90m x 2.80m 16'1" x 9'2"
<b>APARTMENT 134</b> TOTAL AREA: 41.4 SQM (446 SQ.FT) Living/Dining/Kitchen 7.15m x 3.04m 23'6" x 10'0" Bedroom 4.92m x 2.80m 16'2" x 9'2"	<b>APARTMENT 141</b> TOTAL AREA: 39.0 SQM (420 SQ.FT) Living/Dining/Kitchen 6.04m x 3.28m 19'8" x 10'9" Bedroom 4.45m x 2.78m 14'7" x 9'1"
<b>APARTMENT 135</b> TOTAL AREA: 68.1 SQM (733 SQ.FT) Living/Dining/Kitchen 6.69m x 6.16m 21'11" x 20'3" Master Bedroom 5.02m x 2.84m 16'6" x 9'4" Bedroom 2 3.41m x 3.06m 11'2" x 10'0"	<b>APARTMENT 142</b> TOTAL AREA: 64.1 SQM (690 SQ.FT) Living/Dining/Kitchen 7.15m x 3.91m 23'6" x 12'10" Master Bedroom 5.09m x 3.00m 16'8" x 9'10" Bedroom 2 3.97m x 2.78m 13'0" x 9'1"

BLOCK LEVEL NOT TO SCALE

Disclaimer: Door and window details may vary on some plots, please check with your Sales Advisor. The room sizes shown in this brochure may be taken to the widest points in each room; wall to wall tolerance of +/-5% is allowed. External finish may vary on certain plots, please check with the Sales Advisor.



COMPUTER GENERATED IMAGE OF BUILDING TWO



BLOCK GUIDE FOR BUILDING TWO

## BUILDING TWO GROUND FLOOR

### BLOCK LEVEL NOT TO SCALE

Disclaimer: Door and window details may vary on some plots, please check with your Sales Advisor. The room sizes shown in this brochure may be taken to the widest points in each room; wall to wall tolerance of +/-5% is allowed. External finish may vary on certain plots, please check with the Sales Advisor.



## DIMENSIONS

### APARTMENT 201

TOTAL AREA: 41.6 SQM (448 SQ.FT)  
 Living/Dining/Kitchen 6.80m x 3.02m 22'4" x 9'11"  
 Bedroom 4.22m x 2.81m 13'10" x 9'3"

### APARTMENT 202

TOTAL AREA: 72.7 SQM (783 SQ.FT)  
 Living/Dining/Kitchen 7.21m x 3.02m 23'8" x 9'11"  
 Master Bedroom 4.95m x 2.81m 16'3" x 9'3"  
 Bedroom 2 4.27m x 2.58m 14'0" x 8'6"

### APARTMENT 203

TOTAL AREA: 41.6 SQM (448 SQ.FT)  
 Living/Dining/Kitchen 7.21m x 3.04m 23'8" x 10'0"  
 Bedroom 4.94m x 2.81m 16'2" x 9'3"

### APARTMENT 204

TOTAL AREA: 41.7 SQM (449 SQ.FT)  
 Living/Dining/Kitchen 7.21m x 3.06m 23'8" x 10'0"  
 Bedroom 4.94m x 2.81m 16'2" x 9'3"

### APARTMENT 205

TOTAL AREA: 59.6 SQM (642 SQ.FT)  
 Living/Dining/Kitchen 6.56m x 3.34m 21'6" x 11'0"  
 Master Bedroom 4.88m x 2.82m 16'0" x 9'3"  
 Bedroom 2 3.25m x 2.98m 10'8" x 9'9"

### APARTMENT 206

TOTAL AREA: 41.5 SQM (447 SQ.FT)  
 Living/Dining/Kitchen 7.21m x 3.05m 23'8" x 10'0"  
 Bedroom 4.94m x 2.82m 16'2" x 9'3"

### APARTMENT 207

TOTAL AREA: 57.9 SQM (623 SQ.FT)  
 Living/Dining/Kitchen 5.84m x 3.35m 9'2" x 11'0"  
 Master Bedroom 4.88m x 3.05m 16'0" x 10'0"  
 Bedroom 2 3.25m x 2.77m 10'8" x 9'1"

### APARTMENT 208

TOTAL AREA: 64.3 SQM (692 SQ.FT)  
 Living/Dining/Kitchen 7.21m x 3.91m 23'8" x 12'10"  
 Master Bedroom 5.24m x 2.99m 17'2" x 9'10"  
 Bedroom 2 3.94m x 2.63m 12'11" x 8'8"

### APARTMENT 209

TOTAL AREA: 66.4 SQM (715 SQ.FT)  
 Living/Dining/Kitchen 7.21m x 4.25m 23'8" x 13'11"  
 Master Bedroom 4.59m x 3.04m 15'1" x 10'0"  
 Bedroom 2 3.96m x 2.69m 13'0" x 8'10"

### APARTMENT 210

TOTAL AREA: 41.6 SQM (448 SQ.FT)  
 Living/Dining/Kitchen 7.21m x 3.05m 23'8" x 10'0"  
 Bedroom 4.95m x 2.78m 16'3" x 9'1"

### APARTMENT 211

TOTAL AREA: 66.3 SQM (714 SQ.FT)  
 Living/Dining/Kitchen 6.56m x 4.20m 21'6" x 13'9"  
 Master Bedroom 4.85m x 2.92m 15'11" x 9'7"  
 Bedroom 2 3.24m x 2.92m 10'8" x 9'7"

### APARTMENT 212

TOTAL AREA: 41.6 SQM (448 SQ.FT)  
 Living/Dining/Kitchen 7.21m x 3.03m 23'8" x 9'11"  
 Bedroom 4.95m x 2.81m 16'3" x 9'3"

### APARTMENT 213

TOTAL AREA: 57.8 SQM (622 SQ.FT)  
 Living/Dining/Kitchen 5.84m x 3.34m 19'2" x 11'0"  
 Master Bedroom 4.85m x 3.05m 15'11" x 10'0"  
 Bedroom 2 3.22m x 2.77m 10'7" x 9'1"

### APARTMENT 214

TOTAL AREA: 62.7 SQM (675 SQ.FT)  
 Living/Dining/Kitchen 7.21m x 3.94m 23'8" x 12'11"  
 Master Bedroom 5.14m x 2.98m 16'10" x 9'9"  
 Bedroom 2 3.96m x 2.63m 13'0" x 8'8"

## BUILDING B2 FIRST FLOOR



## DIMENSIONS

<b>APARTMENT 215</b> TOTAL AREA: 41.6 SQM (448 SQ.FT) Living/Dining/Kitchen 7.12m x 3.02m 23'4" x 9'11" Bedroom 4.95m x 2.81m 16'3" x 9'3"	<b>APARTMENT 222</b> TOTAL AREA: 64.3 SQM (692 SQ.FT) Living/Dining/Kitchen 7.12m x 3.91m 23'4" x 12'10" Master Bedroom 5.15m x 3.01m 16'11" x 9'11" Bedroom 2 3.94m x 2.65m 12'11" x 8'8"
<b>APARTMENT 216</b> TOTAL AREA: 76.7 SQM (826 SQ.FT) Living/Dining/Kitchen 8.06m x 3.13m 26'5" x 10'3" Master Bedroom 5.65m x 2.42m 18'6" x 7'11" Bedroom 4.48m x 2.59m 14'8" x 8'6"	<b>APARTMENT 223</b> TOTAL AREA: 66.3 SQM (715 SQ.FT) Living/Dining/Kitchen 7.12m x 4.25m 23'4" x 13'11" Master Bedroom 5.07m x 3.04m 16'8" x 10'0" Bedroom 2 3.96m x 2.69m 13'0" x 8'10"
<b>APARTMENT 217</b> TOTAL AREA: 41.5 SQM (447 SQ.FT) Living/Dining/Kitchen 7.12m x 3.04m 23'4" x 10'0" Bedroom 4.94m x 2.81m 16'2" x 9'3"	<b>APARTMENT 224</b> TOTAL AREA: 41.6 SQM (448 SQ.FT) Living/Dining/Kitchen 7.12m x 3.05m 23'4" x 10'0" Bedroom 4.95m x 2.78m 16'3" x 9'1"
<b>APARTMENT 218</b> TOTAL AREA: 41.7 SQM (449 SQ.FT) Living/Dining/Kitchen 7.12m x 3.06m 23'4" x 10'0" Bedroom 4.94m x 2.81m 16'2" x 9'3"	<b>APARTMENT 225</b> TOTAL AREA: 75.5 SQM (813 SQ.FT) Living/Dining/Kitchen 6.46m x 4.17m 21'2" x 13'8" Master Bedroom 4.79m x 2.92m 15'9" x 9'7" Bedroom 2 3.24m x 2.92m 10'8" x 9'7" Study 4.36m x 1.77m 14'4" x 5'10"
<b>APARTMENT 219</b> TOTAL AREA: 59.1 SQM (636 SQ.FT) Living/Dining/Kitchen 6.46m x 3.35m 21'2" x 11'0" Master Bedroom 4.88m x 2.81m 16'0" x 9'3" Bedroom 2 3.25m x 2.99m 10'8" x 9'10"	<b>APARTMENT 226</b> TOTAL AREA: 41.6 SQM (448 SQ.FT) Living/Dining/Kitchen 7.12m x 3.03m 23'4" x 9'11" Bedroom 4.95m x 2.81m 16'3" x 9'3"
<b>APARTMENT 220</b> TOTAL AREA: 41.5 SQM (447 SQ.FT) Living/Dining/Kitchen 7.12m x 3.05m 23'4" x 10'0" Bedroom 4.94m x 2.82m 16'2" x 9'3"	<b>APARTMENT 227</b> TOTAL AREA: 57.8 SQM (622 SQ.FT) Living/Dining/Kitchen 5.90m x 3.34m 19'4" x 11'0" Master Bedroom 4.85m x 3.05m 15'11" x 10'0" Bedroom 2 3.22m x 2.77m 10'7" x 9'1"
<b>APARTMENT 221</b> TOTAL AREA: 57.9 SQM (623 SQ.FT) Living/Dining/Kitchen 5.90m x 3.34m 19'4" x 11'0" Master Bedroom 4.85m x 3.04m 15'10" x 9'11" Bedroom 2 3.25m x 2.78m 10'8" x 9'1"	<b>APARTMENT 228</b> TOTAL AREA: 62.8 SQM (676 SQ.FT) Living/Dining/Kitchen 7.12m x 3.94m 23'4" x 12'11" Master Bedroom 5.05m x 2.98m 16'7" x 9'9" Bedroom 2 3.96m x 2.63m 13'0" x 8'8"

## BUILDING B2 SECOND FLOOR

### BLOCK LEVEL NOT TO SCALE

Disclaimer: Door and window details may vary on some plots, please check with your Sales Advisor. The room sizes shown in this brochure may be taken to the widest points in each room; wall to wall tolerance of +/-5% is allowed. External finish may vary on certain plots, please check with the Sales Advisor.

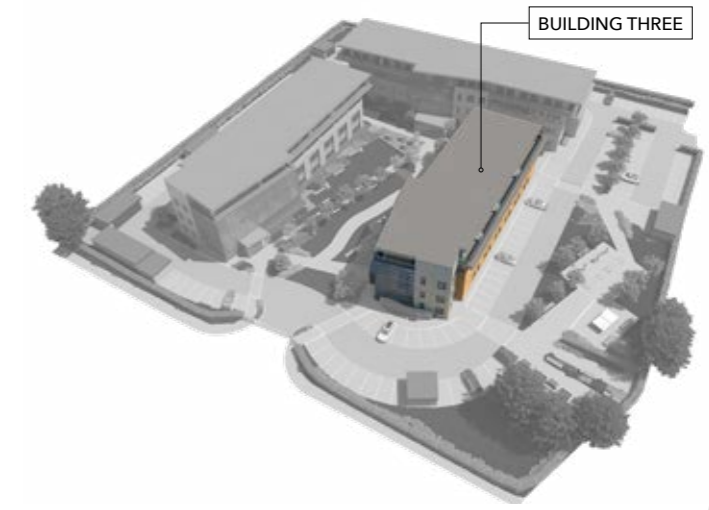


## DIMENSIONS

<b>APARTMENT 229</b> TOTAL AREA: 41.6 SQM (448 SQ.FT) Living/Dining/Kitchen 7.22m x 3.02m 23'8" x 9'11" Bedroom 4.95m x 2.81m 16'3" x 9'3"	<b>APARTMENT 236</b> TOTAL AREA: 64.4 SQM (693 SQ.FT) Living/Dining/Kitchen 7.22m x 3.91m 23'8" x 12'10" Master Bedroom 5.15m x 3.01m 16'11" x 9'11" Bedroom 2 3.94m x 2.65m 12'11" x 8'8"
<b>APARTMENT 230</b> TOTAL AREA: 77.3 SQM (832 SQ.FT) Living/Dining/Kitchen 8.03m x 3.80m 26'4" x 12'6" Master Bedroom 5.56m x 2.49m 18'3" x 8'2" Bedroom 2 4.46m x 2.59m 14'8" x 8'6"	<b>APARTMENT 237</b> TOTAL AREA: 66.5 SQM (716 SQ.FT) Living/Dining/Kitchen 7.22m x 4.25m 23'8" x 13'11" Master Bedroom 5.15m x 3.04m 16'11" x 10'0" Bedroom 2 3.96m x 2.69m 13'0" x 8'10"
<b>APARTMENT 231</b> TOTAL AREA: 41.5 SQM (447 SQ.FT) Living/Dining/Kitchen 7.22m x 3.04m 23'8" x 10'0" Bedroom 4.94m x 2.81m 16'2" x 9'3"	<b>APARTMENT 238</b> TOTAL AREA: 41.7 SQM (449 SQ.FT) Living/Dining/Kitchen 7.22m x 3.05m 23'8" x 10'0" Bedroom 4.95m x 2.78m 16'3" x 9'1"
<b>APARTMENT 232</b> TOTAL AREA: 41.7 SQM (449 SQ.FT) Living/Dining/Kitchen 7.22m x 3.06m 23'8" x 10'0" Bedroom 4.94m x 2.81m 16'2" x 9'3"	<b>APARTMENT 239</b> TOTAL AREA: 76.7 SQM (826 SQ.FT) Living/Dining/Kitchen 6.70m x 4.16m 22'0" x 13'8" Master Bedroom 5.03m x 2.88m 16'6" x 9'5" Bedroom 2 3.38m x 2.96m 11'1" x 9'9" Study 4.37m x 1.76m 14'4" x 5'9"
<b>APARTMENT 233</b> TOTAL AREA: 60.8 SQM (654 SQ.FT) Living/Dining/Kitchen 6.70m x 3.35m 18'8" x 11'0" Master Bedroom 5.02m x 2.81m 16'6" x 9'3" Bedroom 2 3.39m x 2.99m 11'1" x 9'10"	<b>APARTMENT 240</b> TOTAL AREA: 41.6 SQM (448 SQ.FT) Living/Dining/Kitchen 7.22m x 3.03m 23'8" x 9'11" Bedroom 4.95m x 2.81m 16'3" x 9'3"
<b>APARTMENT 234</b> TOTAL AREA: 41.6 SQM (448 SQ.FT) Living/Dining/Kitchen 7.22m x 3.05m 23'8" x 10'0" Bedroom 4.94m x 2.82m 16'2" x 9'3"	<b>APARTMENT 241</b> TOTAL AREA: 59.1 SQM (636 SQ.FT) Living/Dining/Kitchen 6.06m x 3.38m 19'11" x 11'1" Master Bedroom 5.01m x 3.08m 16'5" x 10'1" Bedroom 2 3.38m x 2.73m 11'1" x 8'11"
<b>APARTMENT 235</b> TOTAL AREA: 59.3 SQM (638 SQ.FT) Living/Dining/Kitchen 6.06m x 3.34m 19'10" x 11'0" Master Bedroom 5.03m x 3.05m 16'6" x 10'0" Bedroom 2 3.40m x 2.78m 11'2" x 9'1"	<b>APARTMENT 242</b> TOTAL AREA: 62.8 SQM (676 SQ.FT) Living/Dining/Kitchen 7.22m x 3.94m 23'8" x 12'11" Master Bedroom 5.16m x 2.98m 16'11" x 9'9" Bedroom 2 3.96m x 2.63m 13'0" x 8'8"



COMPUTER GENERATED IMAGE OF BUILDING THREE



BLOCK GUIDE FOR BUILDING THREE

## BUILDING THREE GROUND FLOOR



BLOCK LEVEL NOT TO SCALE

Disclaimer: Door and window details may vary on some plots, please check with your Sales Advisor. The room sizes shown in this brochure may be taken to the widest points in each room; wall to wall tolerance of +/-5% is allowed. External finish may vary on certain plots, please check with the Sales Advisor.

## DIMENSIONS

<p><b>APARTMENT 301</b> TOTAL AREA: 72.1 SQM (776 SQ.FT) Living/Dining/Kitchen 5.82m x 5.07m 19'1" x 16'8" Master Bedroom 4.62m x 3.17m 15'2" x 10'5" Bedroom 2 4.62m x 2.86m 15'2" x 9'5"</p>	<p><b>APARTMENT 307</b> TOTAL AREA: 58.6 SQM (631 SQ.FT) Living/Dining/Kitchen 6.56m x 3.26m 21'6" x 10'8" Master Bedroom 4.98m x 2.95m 16'4" x 9'8" Bedroom 2 3.26m x 2.82m 10'8" x 9'3"</p>
<p><b>APARTMENT 302</b> TOTAL AREA: 51.9 SQM (559 SQ.FT) Living/Dining/Kitchen 7.66m x 3.39m 25'2" x 11'1" Bedroom 5.63m x 2.78m 18'6" x 9'1"</p>	<p><b>APARTMENT 308</b> TOTAL AREA: 61.5 SQM (662 SQ.FT) Living/Dining/Kitchen 7.17m x 3.74m 23'6" x 12'3" Master Bedroom 5.10m x 2.88m 16'9" x 9'5" Bedroom 2 3.90m x 2.70m 12'10" x 8'10"</p>
<p><b>APARTMENT 303</b> TOTAL AREA: 55.6 SQM (598 SQ.FT) Living/Dining/Kitchen 7.49m x 4.01m 24'7" x 13'2" Bedroom 5.03m x 2.82m 16'6" x 9'3"</p>	<p><b>APARTMENT 309</b> TOTAL AREA: 57.2 SQM (616 SQ.FT) Living/Dining/Kitchen 5.85m x 3.39m 19'2" x 11'1" Master Bedroom 4.89m x 2.92m 16'1" x 9'7" Bedroom 2 3.26m x 2.73m 10'8" x 8'11"</p>
<p><b>APARTMENT 304</b> TOTAL AREA: 62.8 SQM (676 SQ.FT) Living/Dining/Kitchen 7.17m x 3.70m 23'6" x 12'2" Master Bedroom 5.12m x 2.92m 16'10" x 9'7" Bedroom 2 3.92m x 2.67m 12'10" x 8'9"</p>	<p><b>APARTMENT 310</b> TOTAL AREA: 31.9 SQM (343 SQ.FT) Living/Kitchen/Bedroom 5.42m x 4.53m 17'9" x 14'10"</p>
<p><b>APARTMENT 305</b> TOTAL AREA: 45.1 SQM (485 SQ.FT) Living/Dining/Kitchen 6.56m x 5.09m 21'6" x 16'8" Bedroom 4.29m x 2.78m 14'1" x 9'1"</p>	<p><b>APARTMENT 311</b> TOTAL AREA: 31.4 SQM (338 SQ.FT) Living/Kitchen/Bedroom 5.42m x 4.47m 17'9" x 14'8"</p>
<p><b>APARTMENT 306</b> TOTAL AREA: 61.8 SQM (665 SQ.FT) Living/Dining/Kitchen 7.17m x 3.72m 23'6" x 12'2" Master Bedroom 4.87m x 2.96m 16'0" x 9'9" Bedroom 2 3.92m x 2.64m 12'10" x 8'8"</p>	

## BUILDING B3 FIRST FLOOR



## DIMENSIONS

**APARTMENT 312**  
 TOTAL AREA: 72.1 SQM (776 SQ.FT)  
 Living/Dining/Kitchen 5.82m x 5.08m 19'1" x 16'8"  
 Master Bedroom 4.28m x 3.25m 14'1" x 10'8"  
 Bedroom 2 4.28m x 3.29m 14'1" x 10'10"

**APARTMENT 318**  
 TOTAL AREA: 58.6 SQM (631 SQ.FT)  
 Living/Dining/Kitchen 6.56m x 3.26m 21'6" x 10'8"  
 Master Bedroom 4.89m x 2.95m 16'1" x 9'8"  
 Bedroom 2 3.27m x 2.82m 10'9" x 9'3"

**APARTMENT 313**  
 TOTAL AREA: 69.1 SQM (744 SQ.FT)  
 Living/Dining/Kitchen 7.07m x 3.22m 23'2" x 10'7"  
 Master Bedroom 6.04m x 2.54m 19'10" x 8'4"  
 Bedroom 2 3.20m x 3.55m 10'6" x 11'8"

**APARTMENT 319**  
 TOTAL AREA: 62.5 SQM (673 SQ.FT)  
 Living/Dining/Kitchen 7.17m x 3.74m 23'6" x 12'3"  
 Master Bedroom 5.10m x 3.02m 16'9" x 9'11"  
 Bedroom 2 3.87m x 2.68m 12'9" x 8'10"

**APARTMENT 314**  
 TOTAL AREA: 55.6 SQM (598 SQ.FT)  
 Living/Dining/Kitchen 7.86m x 4.05m 25'9" x 13'4"  
 Bedroom 5.19m x 2.82m 17'0" x 9'3"

**APARTMENT 320**  
 TOTAL AREA: 57.2 SQM (616 SQ.FT)  
 Living/Dining/Kitchen 5.59m x 3.39m 18'4" x 11'1"  
 Master Bedroom 4.89m x 2.92m 16'1" x 9'7"  
 Bedroom 2 3.26m x 2.73m 10'8" x 8'11"

**APARTMENT 315**  
 TOTAL AREA: 62.8 SQM (676 SQ.FT)  
 Living/Dining/Kitchen 7.17m x 3.71m 23'6" x 12'2"  
 Master Bedroom 5.12m x 2.96m 16'10" x 9'9"  
 Bedroom 2 3.72m x 2.67m 12'2" x 8'9"

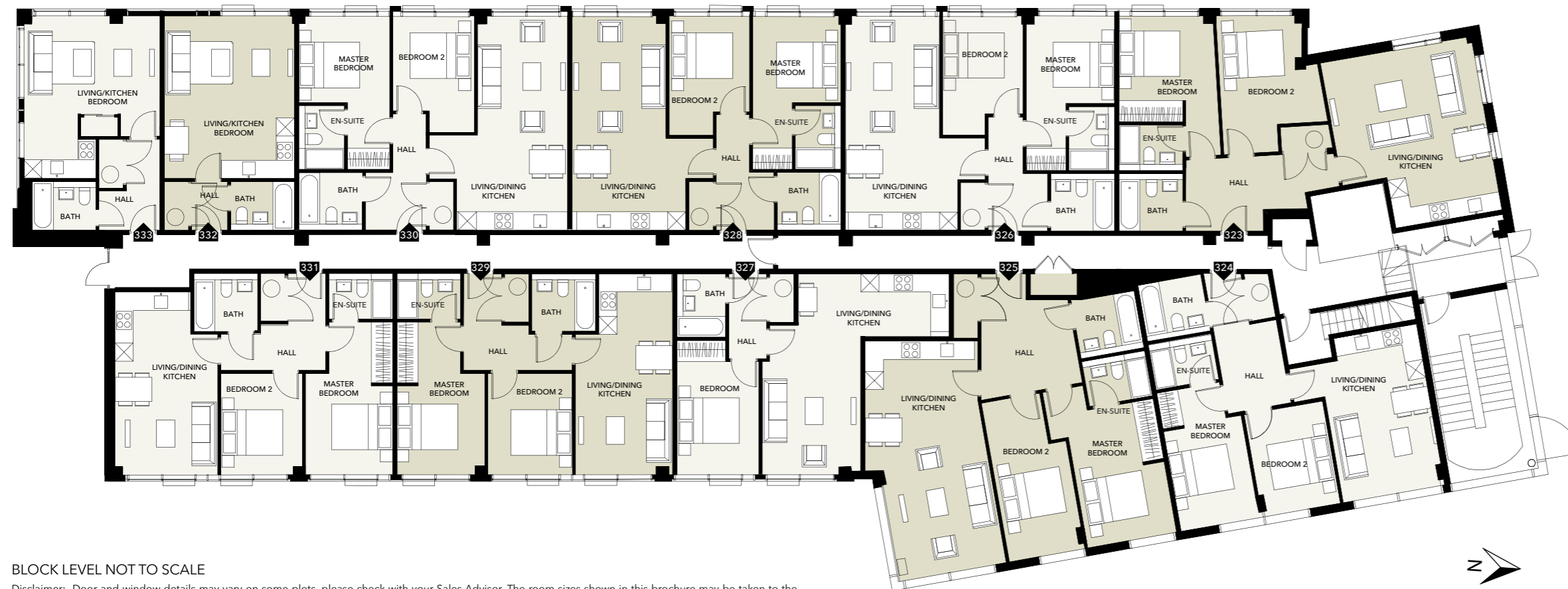
**APARTMENT 321**  
 TOTAL AREA: 30.3 SQM (326 SQ.FT)  
 Living/Kitchen/Bedroom 5.42m x 4.02m 17'9" x 13'2"

**APARTMENT 316**  
 TOTAL AREA: 45.1 SQM (485 SQ.FT)  
 Living/Dining/Kitchen 6.56m x 5.08m 21'6" x 16'8"  
 Bedroom 4.29m x 2.78m 14'1" x 9'1"

**APARTMENT 322**  
 TOTAL AREA: 31.4 SQM (338 SQ.FT)  
 Living/Kitchen/Bedroom 5.42m x 4.43m 17'9" x 14'6"

**APARTMENT 317**  
 TOTAL AREA: 62.4 SQM (672 SQ.FT)  
 Living/Dining/Kitchen 7.17m x 3.77m 23'6" x 12'4"  
 Master Bedroom 5.10m x 2.96m 16'9" x 9'9"  
 Bedroom 2 3.87m x 2.64m 12'9" x 8'8"

## BUILDING B3 SECOND FLOOR



## DIMENSIONS

**APARTMENT 323**  
 TOTAL AREA: 72.1 SQM (776 SQ.FT)  
 Living/Dining/Kitchen 5.82m x 5.03m 19'1" x 16'6"  
 Master Bedroom 4.36m x 3.20m 14'4" x 10'6"  
 Bedroom 2 4.36m x 3.28m 14'4" x 10'9"

**APARTMENT 329**  
 TOTAL AREA: 58.6 SQM (631 SQ.FT)  
 Living/Dining/Kitchen 6.56m x 3.26m 21'6" x 10'8"  
 Master Bedroom 4.89m x 2.95m 16'1" x 9'8"  
 Bedroom 2 3.27m x 2.83m 10'9" x 9'3"

**APARTMENT 324**  
 TOTAL AREA: 57.7 SQM (621 SQ.FT)  
 Living/Dining/Kitchen 5.21m x 3.44m 17'1" x 11'3"  
 Master Bedroom 4.51m x 2.67m 14'10" x 8'9"  
 Bedroom 2 3.33m x 2.65m 10'11" x 8'8"

**APARTMENT 330**  
 TOTAL AREA: 62.5 SQM (673 SQ.FT)  
 Living/Dining/Kitchen 7.12m x 3.74m 23'4" x 12'3"  
 Master Bedroom 5.05m x 3.04m 16'7" x 10'0"  
 Bedroom 2 3.82m x 2.65m 12'6" x 8'8"

**APARTMENT 325**  
 TOTAL AREA: 75.5 SQM (813 SQ.FT)  
 Living/Dining/Kitchen 7.72m x 4.02m 25'4" x 13'2"  
 Master Bedroom 5.30m x 3.02m 17'5" x 9'11"  
 Bedroom 2 5.30m x 2.56m 17'5" x 8'5"

**APARTMENT 331**  
 TOTAL AREA: 57.3 SQM (617 SQ.FT)  
 Living/Dining/Kitchen 6.02m x 3.41m 19'9" x 11'2"  
 Master Bedroom 4.89m x 2.91m 16'1" x 9'7"  
 Bedroom 2 3.26m x 2.73m 10'8" x 8'11"

**APARTMENT 326**  
 TOTAL AREA: 62.8 SQM (676 SQ.FT)  
 Living/Dining/Kitchen 7.12m x 3.11m 23'4" x 10'2"  
 Master Bedroom 5.07m x 2.96m 16'8" x 9'9"  
 Bedroom 2 3.72m x 2.67m 12'2" x 8'9"

**APARTMENT 323**  
 TOTAL AREA: 30.3 SQM (326 SQ.FT)  
 Living/Kitchen/Bedroom 5.35m x 4.38m 17'7" x 14'4"

**APARTMENT 327**  
 TOTAL AREA: 45.1 SQM (485 SQ.FT)  
 Living/Dining/Kitchen 6.56m x 5.08m 21'6" x 16'8"  
 Bedroom 4.29m x 2.78m 14'1" x 9'1"

**APARTMENT 333**  
 TOTAL AREA: 31.4 SQM (338 SQ.FT)  
 Living/Kitchen/Bedroom 5.35m x 4.55m 17'7" x 14'11"

**APARTMENT 328**  
 TOTAL AREA: 62.4 SQM (672 SQ.FT)  
 Living/Dining/Kitchen 7.12m x 3.80m 23'4" x 12'6"  
 Master Bedroom 5.05m x 2.96m 16'7" x 9'9"  
 Bedroom 2 3.72m x 2.69m 12'2" x 8'10"

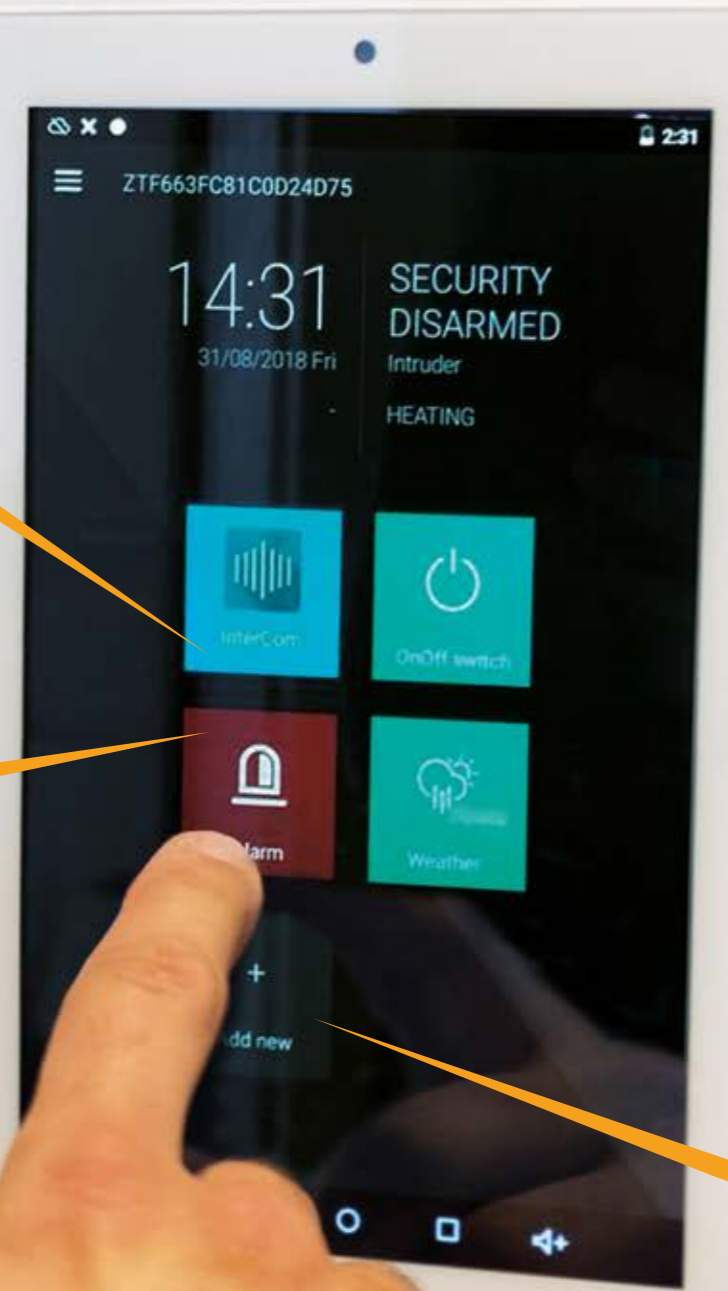
BLOCK LEVEL NOT TO SCALE

Disclaimer: Door and window details may vary on some plots, please check with your Sales Advisor. The room sizes shown in this brochure may be taken to the widest points in each room; wall to wall tolerance of +/-5% is allowed. External finish may vary on certain plots, please check with the Sales Advisor.

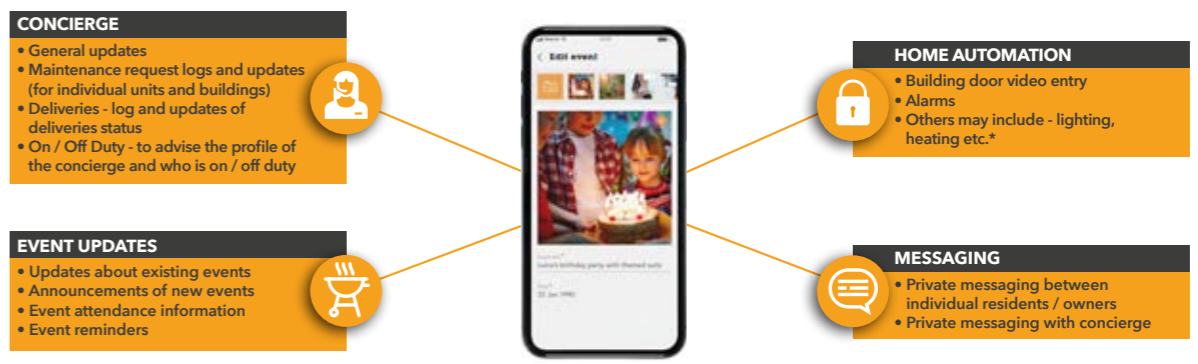
**SEE WHO'S ARRIVED AT THE FRONT DOOR**  
Remote control of your video door entry system to see who's come to dinner.

**SWITCH YOUR ALARM ON AND OFF**  
Whether you're in or out, you have automatic control over your alarm system.

**CONTROL YOUR LIGHTING & HEATING**  
Turn on and off and adjust your heating using the simple Zipato interface.



ZIPATO HOME AUTOMATION SYSTEM



FEATURES THAT CAN BE CONTROLLED VIA THE BLULIVING APP

## Save yourself **time** with smart technology

**As a resident or owner of a BluLiving apartment, you will have automatic access to the private BluLiving app that will inform, advise and allow you to control any regular tasks whether you're home or away.**

Each property at Blu Bracknell will come with the Zipato home automation system pre-installed. This can be programmed to control pretty much everything that is electric in your apartment and can be voice controlled using an Amazon Alexa.\* Remote control of your lighting, heating and alarm systems can be achieved with the Zipato system and you can also check real-time data about your property.

Most people own a smart phone, smart watch or tablet so when registered, they can instantly download the BluLiving app. From the BluLiving app you will be able to remotely control your Zipato home automation system. This neat little piece of technology will

keep occupants abreast of any events arranged for Blu Bracknell residents and will even show who is attending.

You'll have direct contact with the concierge via a private messaging service and can find out who is on duty. If you're expecting a delivery while you're out, the app will show you a log of receipts at reception and will advise when it's collected.

You can check maintenance updates for your own apartment or for communal areas inside and out. You'll also have the option of private messaging the other residents at Blu Bracknell so it's a great way to build up a local network of friends and find out when events are happening.

\*Please check with your Sales Advisor if there are additional costs

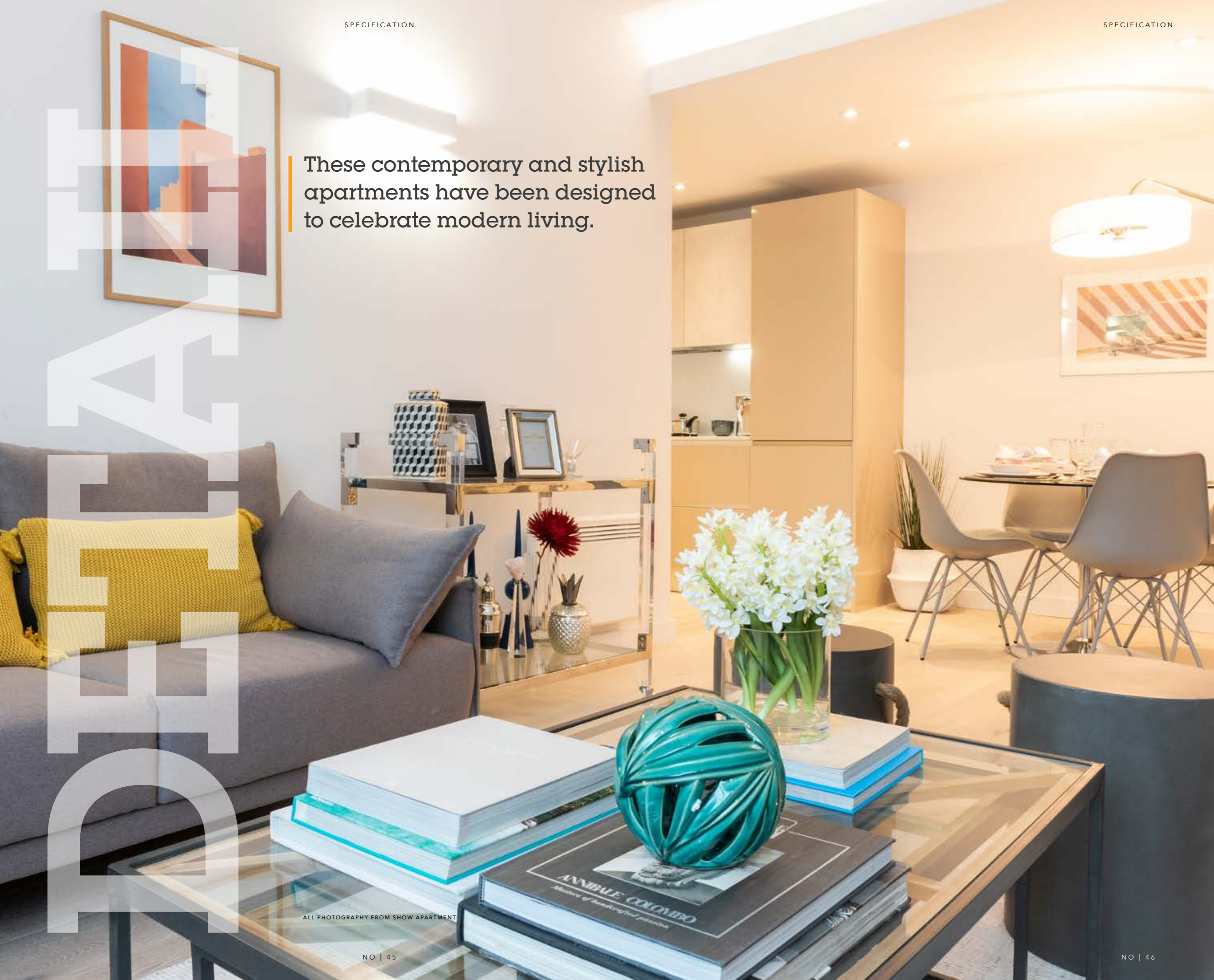


FEATURES CONTROLLED VIA BLULIVING APP



ZIPATO HOME AUTOMATION SYSTEM

These contemporary and stylish apartments have been designed to celebrate modern living.



REAR





PHOTOGRAPH FROM SHOW APARTMENT



PHOTOGRAPH FROM SHOW APARTMENT

## The **Blu** Bracknell specification is designed to impress

Our interior designers have lent their skills to provide sumptuous yet functional homes that will save you time and effort while impressing on every level.

### GENERAL

- Tall internal and entry doors
- Suspended feature ceiling to kitchen with LED mood lighting and spot lights
- Storage cupboard to hallway with utility controls, storage space, water tank and plumbed for washer / dryer
- High quality oak engineered wood flooring throughout (except bedroom)
- Luxury carpet to bedroom
- Built in wardrobes to master bedroom
- All windows are openable for natural ventilation

### LIGHTING AND ELECTRICS

- Zipato Zipatile video entry and home automation control system
- White modern light switches
- Suspended ceilings have recessed LED spotlights
- Feature mood lighting between kitchen and living room
- Designer wall lights to living room and bedroom

### KITCHEN & APPLIANCES

- Fully fitted Italian designer kitchens with integrated LED cupboard lighting; under counter sink and stainless-steel tapware
- Silestone worktop with full height splashback
- Dual tone lacquered handle-less soft close kitchen units and drawers
- Ample storage, pan drawer
- Fitted SMEG appliances
  - Tall integrated fridge/freezer
  - Integrated dishwasher
  - Ceramic hob
  - Integrated microwave
  - Built-in oven
  - Integrated telescopic hidden extractor

### BATHROOM

- Fully tiled bathroom floors and walls
- Bathrooms with Duravit bath incorporating overhead rain shower and hand-held shower
- Ensuites with walk in rain shower and hand-held shower
- Modern sanitary ware
- Duravit floor standing white WC with concealed cistern
- Geberit chrome flush plate to toilets
- Modern branded taps and shower fittings
- Underfloor heating
- Electric heated towel rails (in main bathroom)
- Vanity unit with mirrored storage
- Shaver socket

Disclaimer: Specification details are for general guidance only and the developer reserves the right to substitute any material or item for an alternative of equal or superior quality. For a more detailed specification of your chosen property, please ask the Sales Advisor. This is a guide and may be subject to change.



PHOTOGRAPH FROM SHOW APARTMENT



14 MANDEVILLE COURTYARD



13 & 14 MANDEVILLE COURTYARD



ABOVE LOCHALINE STREET BELOW 24 DONOVAN COURT

## We help you make the best choices **time** and **time** again

**Blu Bracknell is being developed by Select Developments. We have a strong track record in delivering exceptional professionally interior designed apartments with attention to detail at the heart of everything that we do.**

Select Developments Group has harnessed its reputation as a trusted, highly credible and proven developer. We have achieved this by building a solid track record for acquiring, developing and bringing to market interior-led properties across the capital's most desirable postcodes including Chelsea, Westminster, Battersea and Fulham.

Undoubtedly, our strength lies in combining the team's expansive industry knowledge, particularly of the London market, and delivering high quality residential developments. We are now expanding and diversifying our portfolio to incorporate the London commuter belts to deliver residents and investors stunning apartments.

Professionalism, quality design and attention to detail is at the heart of everything that we do. With more than 50 years combined experience, our in-house interior architects and project managers are responsible for taking properties from inception through to completion.

We ensure that we enhance all living spaces with clever design details and sourcing premium fixtures and fittings from designer styled kitchens hand-picked from Italy through to engineered wood flooring and Italian porcelain tiles to deliver market leading residential dwellings.